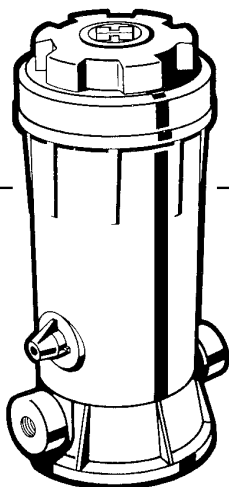


OWNER'S GUIDE

INSTALLATION AND OPERATING INSTRUCTIONS



HAYWARD® CL-220 SERIES AUTOMATIC CHLORINE FEEDER

Your Hayward CL-220 series automatic chlorine feeder is designed for installation next to your filter system. It operates by the pressure differential of your system which draws water through the feeder. It uses slow-dissolve Trichloro-S-Triazinetrione (Tri-Chlor) large or small tablets (or sticks) ONLY. No other type of chemical should ever be used in your chlorine feeder. Your CL-220 holds up to 18 large (3" diameter) tablets (about 9 lbs.) and has a dial type control valve to regulate the rate of water flow through the chlorine feeder. This large capacity feature, under normal conditions, should provide a minimum of two weeks chlorination for large pools. By regulating the valve setting between FULL (more chlorine) and OFF (less chlorine) and the amount of Tri-Chlor tablets you place in the feeder, you can easily adjust the chlorine feed rate that is necessary to maintain the proper chlorine residual for your pool.

CAUTION – READ CAREFULLY

This chlorine feeder is designed to use only Trichloro-S-Triazinetrione tablets - slow dissolving type. NEVER MIX with other types of chlorine or chemicals. Explosion or fire may result.

Exercise extreme caution when opening or servicing your feeder. Always shut off pump and available valves before opening. Do not inhale fumes from any chemical feeder or container. Protect your eyes, skin and clothing from chemicals at all times.

NEVER open chlorinator when pump is running.

To prevent build up of gas in chlorinator, be sure pool return line valve(s) is kept open - except when opening/servicing unit.

Always read label and carefully follow chlorine manufacturer's and dealer's recommendations for proper water conditioning and daily chlorine requirements for your particular pool and area.

DIRECTIONS FOR USE

Before start up of your chlorine feeder, your pool/spa should be properly conditioned and have a chlorine residual of approximately 1.0 to 1.5 ppm. Follow dealer and chemical manufacturer's directions and instructions.

The chlorine demand for pools and spas varies based on use, temperature, sunlight, etc. Initially, you'll have to experiment to determine the proper amount of chlorine and the correct valve setting required for your pool and filter time cycle. Using a 20,000 gallon pool as a guide, we suggest you place about 8 large, slow dissolve Tri-Chlor tabs (or about 4 lbs. of small slow dissolve tabs or sticks) in your feeder and place the dial valve setting at No. 3. (Reduce or increase the amount of chlorine according to pool size, i.e., 30,000 gal. - add 50% more tabs.)

Check chlorine residual daily and adjust the dial valve for more or less chlorine. Increasing the quantity of chlorine in your feeder will extend the time between recharging your feeder with more chlorine.

EASY-LOK COVER

TO OPEN:

1. Shut off pump and turn Dial Control Valve to OFF. Shut off any other in-line valves to prevent back flow - if applicable. Wait one minute.
2. Turn knurled Cover Cap counter-clockwise to open. Caution: Do not inhale fumes from chlorinator.

TO CLOSE:

1. Press Cover, with o-ring seal, firmly into body. Engage Cover Cap threads and turn clockwise to stop lug.
2. Place Dial Control Valve to desired setting. Open in-line valves and re-start pump.

VACUUMING

When vacuuming, close dial control valve to prevent bypass of sediment and possible clogging of control valve.

TO CHANGE O-RING

Pry off Logo Cap. Unscrew and remove Retainer Screw. Cover may now be slipped free of the Cover Cap. Replace o-ring. Reassemble being sure Slip Washers are in place on stem of Cover (inside), and under head of retaining screw.

Never use petroleum type lubricants on Cover o-ring. To lubricate, use Ivory bar soap or Jack's No. 327 lube only.

TO REMOVE DIAL VALVE HANDLE

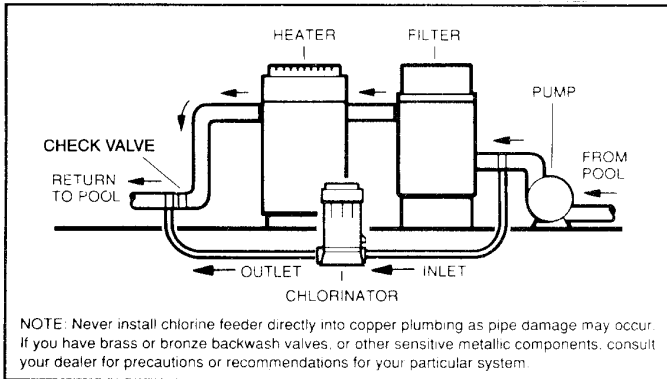
Set pointer to FULL. Insert screwdriver in slot opposite pointer, lift up and rotate handle counter-clockwise. This allows the handle index lock tab to clear the body ridge.

WINTERIZING

Where freezing temperatures can be expected, drain all water from feeder (for in-line, permanently installed units, remove drain plug). Carefully remove undissolved sticks or tablets, and rinse out chlorinator thoroughly with water. Replace Cover and engage 1½ turns.

PLANNING INSTALLATION

1. Position chlorinator on level surface as close to the filter and pump as practical. The preferred installation is above water level and located in line below filter or heater outlets. An in-line positive seal corrosion resistant check valve should be installed to reduce backflow of chlorine gas when the system is shut off. If the chlorine feeder must be located below water level, provide a check valve to prevent water backflow when opening/servicing the unit.
2. The Inlet connection will be made in the piping *after* the pump and *before* the filter. Mark pipe.
3. The Outlet connection will be made in the piping *after* the heater. If no heater, connection will be made *after* filter. Mark pipe.
4. Based on location of No. 2 and No. 3, cut tubing to required lengths. Be sure ends are cut evenly and cleanly.



CONNECTION TO CHLORINATOR

5. Wrap three wraps of Teflon tape on larger male thread

of Inlet Adapter and thread securely into INLET side of chlorinator (below dial valve). Note: The Inlet Adapter and Check Valve Outlet Adapter look similar. The Check Valve Adapter has a "dot" and a ball check that "clicks" when you shake it.

6. Wrap Teflon tape on larger male thread of Check Valve (marked with dot) and thread securely into OUTLET side of chlorinator.
7. To connect inlet tubing to chlorinator, place Compression Nut over inlet tubing and slide nut up about 2". Insert the tubing all the way into the adapter socket and, holding tubing in place, tighten nut firmly by hand. Do not over-tighten.
8. Make outlet connection in same manner as Step 7.

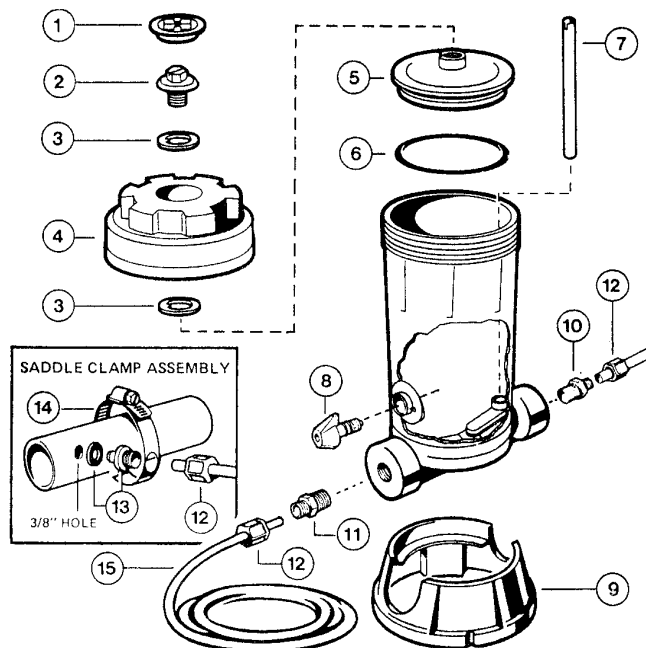
INSTALLING IN PLUMBING LINES. The Saddle Fittings and Clamps are designed to fit the O.D. of 1 1/2" or 2" pipe.

9. **INLET:** Locate inlet connection after pump and before filter as in Step 2. Drill a 3/8" hole in pipe. Clean burrs, shavings, etc. Fit Saddle Fitting, with gasket, into shaped hole in clamp and insert fitting into 3/8" hole. Secure clamp around Saddle Fitting, gasket and pipe and tighten securely to achieve a good seal. Do not overtighten clamp.
10. **OUTLET:** Locate outlet connection after the heater and after filter as in Step 3. Drill a 3/8" hole and install Saddle Fitting as in Step 9.
11. Connect plumbing inlet and outlet tubing with Compression Nuts as in Step 7. Do not overtighten.

NOTE: After starting up system, re-check all connections for leaks. Re-tighten as required.

PARTS - CL-220 SERIES

REF. NO.	PART NO.	DESCRIPTION	NO. REQ'D.
1	CL-200-E	Logo Cap	1
2	CL-200-G	Cover Retaining Screw	1
3	CL-200-W	Slip Washer	2
4	CL-200-C-2	Cover Cap	1
5	CL-200-B	Cover	1
6	CL-200-K	O-Ring	1
7	CL-200-H	Feeder Tube (some models)	1
8	CL-200-PA	Control Valve Assembly	1
9	CL-220-B	Mounting Base	1
10	CL-220-CV	Check Valve Assembly	1
11	CL-220-D	Inlet Fitting Adapter	1
12	CL-220-H	Compression Nuts	4
13	CL-220-G	Saddle Fitting	2
14	CL-220-K	Saddle Clamp	2
15	CL-220-J	Plastic Tubing - 8 Ft.	1



To be N.S.F. Listed, a flow rate indicator must be installed on chlorinator inlet line.



HAYWARD POOL PRODUCTS, INC.

Hayward Pool Products, Inc.
900 Fairmount Avenue
Elizabeth, NJ 07207

Hayward Pool Products, Inc.
2875 Pomona Boulevard
Pomona, CA 91768

Hayward Pool Products Canada
2880 Plymouth Drive
Oakville, Ontario L6H 5R4

Hayward S.A.
Zone Industrielle de Jumet
B - 6040 Charleroi (Belgium)